



Read this manual carefully!



Before to install this program you must agree with license conditions!



QUICK GUIDE TO “MAX5-PC COMMUNICATION SOFTWARE”



This program is compatible with:
Microsoft Windows XP - VISTA.
Minimum Processor: Intel Pentium 4 1.3Ghz or better
Minimum RAM: 512MB.

Installation procedure is automatic and user must press “next” button if not otherwise specified.

Installation procedure may vary if your O/S has or hasn't “.net”, “SQL” and “Crystal Report” libraries installed.



Read it carefully!

ENGLISH Version



SOFTWARE LICENSE AGREEMENT

SOFTWARE LICENSE AGREEMENT

PLEASE READ THIS SOFTWARE LICENSE AGREEMENT CAREFULLY BEFORE DOWNLOADING OR USING THE SOFTWARE. BY CLICKING ON THE "ACCEPT" BUTTON, OPENING THE PACKAGE, DOWNLOADING THE PRODUCT, OR USING THE EQUIPMENT THAT CONTAINS THIS PRODUCT, YOU ARE CONSENTING TO BE BOUND BY THIS AGREEMENT. IF YOU DO NOT AGREE TO ALL OF THE TERMS OF THIS AGREEMENT, CLICK THE "DO NOT ACCEPT" BUTTON AND THE INSTALLATION PROCESS WILL NOT CONTINUE, RETURN THE PRODUCT TO THE PLACE OF PURCHASE FOR A FULL REFUND, OR DO NOT DOWNLOAD THE PRODUCT.

Single User License Grant: EMEC, Srl ("EMEC") and its suppliers grant to Customer ("Customer") a nonexclusive and nontransferable license to use the "MAX5 PC Communication" software ("Software") in object code form solely on a single central processing unit owned or leased by Customer or otherwise embedded in equipment provided by EMEC.

Customer may make one (1) archival copy of the Software provided Customer affixes to such copy all copyright, confidentiality, and proprietary notices that appear on the original.

EXCEPT AS EXPRESSLY AUTHORIZED ABOVE, CUSTOMER SHALL NOT: COPY, IN WHOLE OR IN PART, SOFTWARE OR DOCUMENTATION; MODIFY THE SOFTWARE; REVERSE COMPILER OR REVERSE ASSEMBLE ALL OR ANY PORTION OF THE SOFTWARE; OR RENT, LEASE, DISTRIBUTE, SELL, OR CREATE DERIVATIVE WORKS OF THE SOFTWARE.

Customer agrees that aspects of the licensed materials, including the specific design and structure of individual programs, constitute trade secrets and/or copyrighted material of EMEC. Customer agrees not to disclose, provide, or otherwise make available such trade secrets or copyrighted material in any form to any third party without the prior written consent of EMEC. Customer agrees to implement reasonable security measures to protect such trade secrets and copyrighted material. Title to Software and documentation shall remain solely with EMEC.

LIMITED WARRANTY. EMEC warrants that for a period of ninety (90) days from the date of shipment from EMEC: (i) the media on which the Software is furnished will be free of defects in materials and workmanship under normal use; and (ii) the Software substantially conforms to its published specifications. Except for the foregoing, the Software is provided AS IS. This limited warranty extends only to Customer as the original licensee. Customer's exclusive remedy and the entire liability of EMEC and its suppliers under this limited warranty will be, at EMEC or its service center's option, repair, replacement, or refund of the Software if reported (or, upon request, returned) to the party supplying the Software to Customer. In no event does EMEC warrant that the Software is error free or that Customer will be able to operate the Software without problems or interruptions.

This warranty does not apply if the software (a) has been altered, except by EMEC, (b) has not been installed, operated, repaired, or maintained in accordance with instructions supplied by EMEC, (c) has been subjected to abnormal physical or electrical stress, misuse, negligence, or accident, or (d) is used in ultrahazardous activities.

DISCLAIMER. EXCEPT AS SPECIFIED IN THIS WARRANTY, ALL EXPRESS OR IMPLIED CONDITIONS, REPRESENTATIONS, AND WARRANTIES INCLUDING, WITHOUT LIMITATION, ANY IMPLIED WARRANTY OF MERCHANTABILITY, FITNESS FOR A PARTICULAR PURPOSE, NON-INFRINGEMENT OR ARISING FROM A COURSE OF DEALING, USAGE, OR TRADE PRACTICE, ARE HEREBY EXCLUDED TO THE EXTENT ALLOWED BY APPLICABLE LAW.

IN NO EVENT WILL EMEC OR ITS SUPPLIERS BE LIABLE FOR ANY LOST REVENUE, PROFIT, OR DATA, OR FOR SPECIAL, INDIRECT, CONSEQUENTIAL, INCIDENTAL, OR PUNITIVE DAMAGES HOWEVER CAUSED AND REGARDLESS OF THE THEORY OF LIABILITY ARISING OUT OF THE USE OF OR INABILITY TO USE THE SOFTWARE



SOFTWARE LICENSE AGREEMENT

EVEN IF EMEC OR ITS SUPPLIERS HAVE BEEN ADVISED OF THE POSSIBILITY OF SUCH DAMAGES.

In no event shall EMEC's or its suppliers' liability to Customer, whether in contract, tort (including negligence), or otherwise, exceed the price paid by Customer. The foregoing limitations shall apply even if the above-stated warranty fails of its essential purpose. SOME STATES DO NOT ALLOW LIMITATION OR EXCLUSION OF LIABILITY FOR CONSEQUENTIAL OR INCIDENTAL DAMAGES.

The above warranty DOES NOT apply to any beta software, any software made available for testing or demonstration purposes, any temporary software modules or any software for which EMEC does not receive a license fee. All such software products are provided AS IS without any warranty whatsoever.

This License is effective until terminated. Customer may terminate this License at any time by destroying all copies of Software including any documentation. This License will terminate immediately without notice from EMEC if Customer fails to comply with any provision of this License. Upon termination, Customer must destroy all copies of Software.

Software, including technical data, is subject to Italy export control laws and may be subject to export or import regulations in other countries. Customer agrees to comply strictly with all such regulations and acknowledges that it has the responsibility to obtain licenses to export, re-export, or import Software.

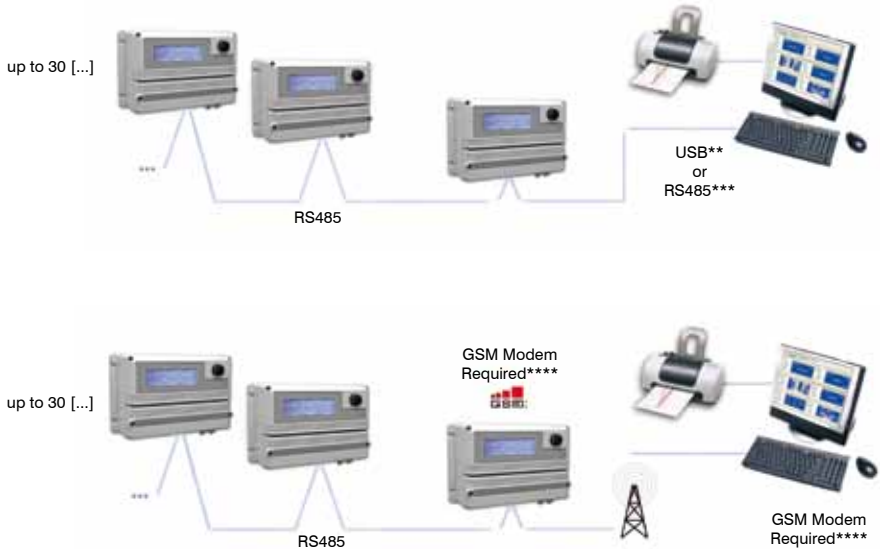
This License shall be governed by and construed in accordance with the laws of Italy, as if performed wholly within the state and without giving effect to the principles of conflict of law. If any portion hereof is found to be void or unenforceable, the remaining provisions of this License shall remain in full force and effect. This License constitutes the entire License between the parties with respect to the use of the Software.

Rieti, 01/06/08.

Introduction

"MAX5 PC Communication" is a software to control and program (locally via RS485 / USB, ethernet or remotely through a GSM modem) a network of up to 30* "Max5" instruments. An easy to use interface lets user to control all "MAX5" functionalities. Software runs on Microsoft Windows XP and Vista operating systems. See front page manual for minimum system requirements.

Local and remote basic connections schemes:



Things to know before to install the software.

1. Ensure that your PC meets minimum system requirements.
2. Don't connect instrument and adapter to PC before to properly install software.
3. Determine if you need to connect one or more "MAX5" to PC through USB / ETHERNET / GSM or RS485 ADAPTER and follow related connection.
4. Perform hardware connection only when "MAX5" is unplugged from main power.

* Only using RS485 connection.

** USB connection controls one "MAX5" instrument and it doesn't need any adapter to operate.

*** RS485 connection must be used in conjunction with a RS485 / USB or COM adapter. Adapter is sold as option.

**** Sold as option.

Configuration A.

Single "MAX5" connection using USB cable.

To properly set this configuration a USB cable is required. Insert SOFTWARE CD into PC CDROM reader and follow installation procedure. If CDROM doesn't autostart please open folder containing CDROM and launch "setup.exe". Please note: using this configuration is possible to connect one "MAX5" only.

Disconnect "MAX5" power cable from main power socket. Open "MAX5" mainboard cover and connect USB cable. Reconnect power cable to main power socket and wait until "MAX5" is properly initialized. Connect other side of USB cable to PC using a free USB port and wait until drivers are installed (virtual com). Launch communication software.

USB cable used to connect MAX5 to PC



Things to know about USB Connection.

Q1: How long of a cable can I use to connect my device?

A1: In practice, the USB specification limits the length of a cable between full speed devices to 5 meters (a little under 16 feet 5 inches). For a low speed device the limit is 3 meters (9 feet 10 inches).

Q2: Why can't I use a cable longer than 3 or 5m?

A2: USB's electrical design doesn't allow it. When USB was designed, a decision was made to handle the propagation of electromagnetic fields on USB data lines in a way that limited the maximum length of a USB cable to something in the range of 4m. This method has a number of advantages and, since USB is intended for a desktop environment, the range limitations were deemed acceptable.

Q3: How far away from a PC can I put a USB device?

A3: With the maximum of 5 hubs connected with 5m cables and a 5m cable going to your full speed device, this will give you 30m of cable. With a low speed device, you will be able to get a range up to 27m, depending on how long the device's cable is. With a straightforward cable route, you will probably be able to reach out 25m or so from the PC.



Hardware Setup (RS485)

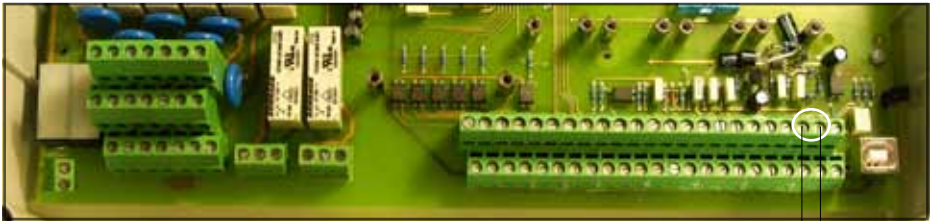
Configuration B.

One or more "MAX5" connection using RS485 cable.

To properly set this configuration ADLINK ADAPTER and a USB cable are required. Insert SOFTWARE CD into PC CDROM reader and follow installation procedure. If CDROM doesn't autostart please open folder containing CDROM and launch "setup.exe".

Install supplemental software from CDROM labeled "ALL IN ONE CD". Insert CD into PC CDROM reader and follow installation procedure. If CDROM doesn't autostart please open folder containing CDROM and launch "setup.exe".

Disconnect "MAX5" power cable from main power socket. Open "MAX5" mainboard cover and connect RS485 blocks n.21 and n.22 to ADLINK ADAPTER as shown. Reassemble "MAX5" mainboard cover and reconnect power cable to main power socket and wait until "MAX5" is properly initialized. Connect USB cable of ADLINK ADAPTER to PC using a free USB port and wait until drivers are installed (virtual com). Launch communication software.



21 22

to PC

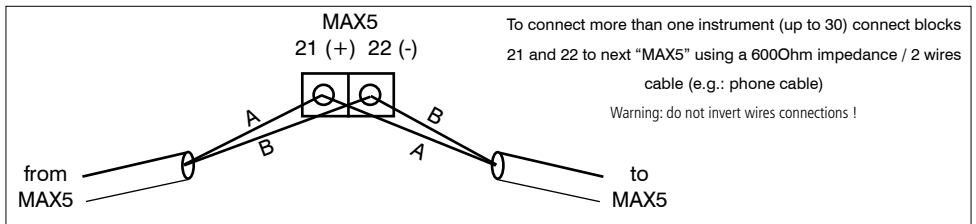


to MAX5

USB cable used to connect ADAPTER to PC



to PC to ADAPTER



Configuration C.

One or more "MAX5" connection using built-in GSM modem.

To properly set this configuration GSM MODEM for MAX5 and a SIM with data plan are required. Another GSM modem must be installed to PC. Insert SOFTWARE CD into PC CDROM reader and follow installation procedure. If CDROM doesn't autostart please open folder containing CDROM and launch "setup.exe".



Disconnect "MAX5" power cable from main power socket. Open "MAX5" mainboard cover, place SIM into sim-holder (pull up) then close it (pull down) and lock it by moving down sim-holder until a "click" is heard. Reassemble "MAX5" mainboard cover. Connect power cable to main power socket and wait until "MAX5" is properly initialized. If more than one "MAX5" need to be connected refer to previous page.



If connection went OK a signal status bar should be shown on "MAX5" main screen.
INSERT EXTERNAL ANTENNA WHILE "MAX5" IS NOT POWERED.

PLACE EXTERNAL ANTENNA IN A PLACE WITH MAXIMUM GSM SIGNAL !

WARNING: THIS FUNCTION COULD NOT BE FREE OF CHARGE. DEPENDING ON YOUR OPERATOR CONTRACT IT COULD GENERATE PAYING DATA TRAFFIC !

Hardware Setup (ETHERNET)

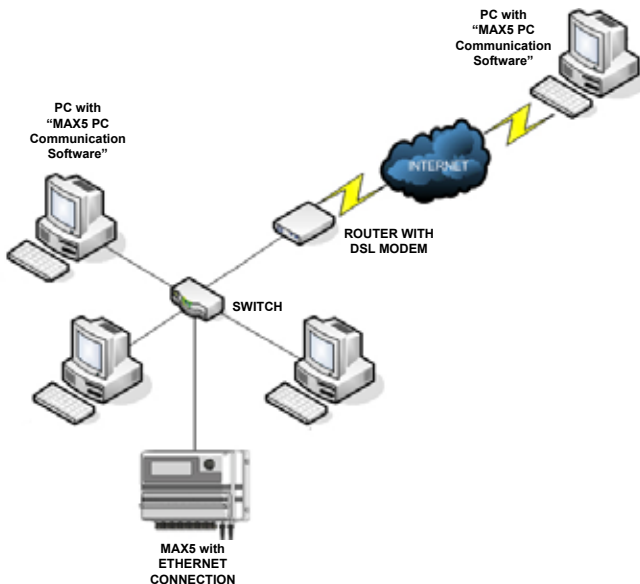
Configuration D.

"MAX5" connection using ethernet port and TIBBO hardware for ethernet and internet remote control (see page 14)

A dynamic IP address and a CAT5 ethernet cable is required. According to your network capacity connection speed is 10/100Mbps. To obtain a valid IP address or to know if DHCP is active contact your net administrator. Enter parameters to MAX5 including RS485 ID number (see MAX5 instructions manual). Using router IP and port 1000 forwarding option, MAX5 can be controlled through the internet too.

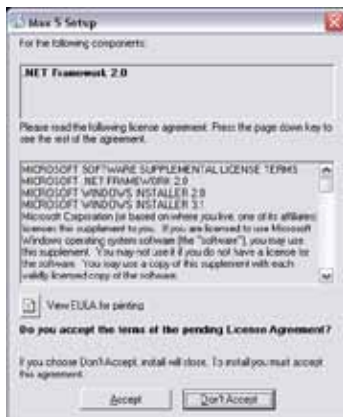


Connect ethernet cable as you usually do with an ethernet cable peripheral in your local network. Insert SOFTWARE CD into PC CDROM reader and follow installation procedure. If CDROM doesn't autostart please open folder containing CDROM and launch "setup.exe". Go to page 12 to see how to start an ethernet connection from your PC.



Software Installation

Insert SOFTWARE CD into PC CDROM reader and follow installation procedure. If CDROM doesn't autostart please open folder containing CDROM and launch "setup.exe". Depending on PC the installation time may vary (max 60 minutes).



You must accept license agreement for one or more components to continue with installation procedure.



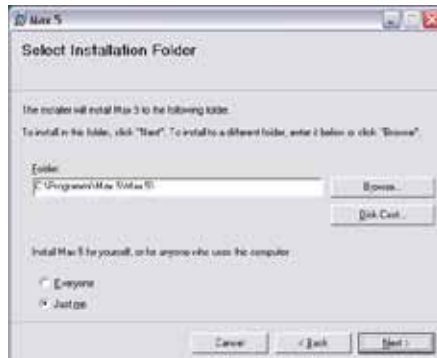
Press "NEXT" to continue otherwise "CANCEL" to stop installation procedure. If you press "CANCEL" to remove supplemental components use "Uninstall programs" from Windows.

While installing "MAX5-PC Communication Software" please do not connect "MAX5" to PC.

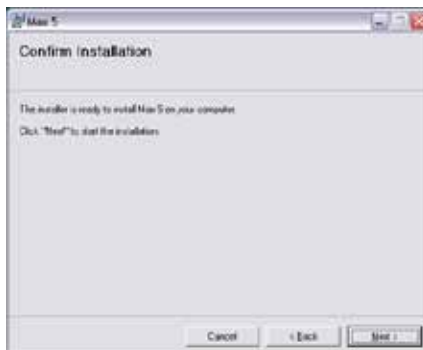
Windows Vista Users:

If your O/S is Windows Vista an error message could be shown while installing the software. Ignore it and continue installation process but download updated version of supplemental components (SQL, .NET and Crystal Reports) at the end of installation and before to launch "MAX5-PC Communication Software".

If needed is possible to install “MAX5-PC Communication Software” in a different folder from the default one. Click on “Browse” to perform this task. Otherwise press “NEXT” to continue with installation.



Choose to install “MAX5-PC Communication Software” for everyone or just for itself. Default option is “Just me”.

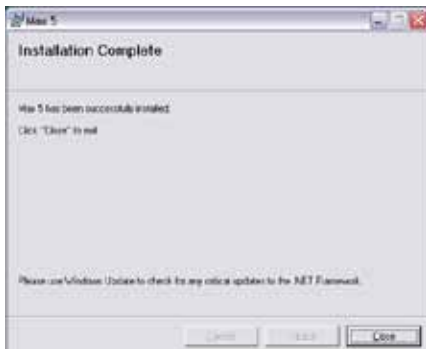


Now press “NEXT” to perform final installation tasks.

Why this installation is taking so long to complete?

Depending on PC Hardware configuration and / or supplemental components, the entire procedure will take about 20 minutes. Maximum installation time is 60 minutes. If after this time PC doesn't end procedure or hangs please restart it and repeat installation.

Installation procedure ends with the following screen:



Press "Close". It's a good idea to restart PC before to launch program.

While PC is restarting check ID NUMBER into "MAX5". See page 25 of "OPERATING INSTRUCTIONS FOR MAX5 INSTRUMENT" manual. For network configuration a unique ID must be assigned in order to retrieve instrument data from PC.



From "RS485 setup" menu assign ID n.1 by rotating the wheel. Press "OK". A confirmation message will be shown.

Now launch "MAX5-PC Communication Software" by double-clicking on its desktop icon or from start menu under programs tab.



MAX5 Desktop Icon

After a short welcome screen message, a connection screen will pop-up. Click on “LOCAL NETWORK” icon if “MAX5” is directly connected to PC using RS485* or USB** or ETHERNET**** cable. Otherwise if PC has installed a GSM*** modem and connection to MAX5 must be realized using it, choose COM port number, enter “MAX5” phone number and click on folders icon.

1. Choose local connection type and “MAX5” ID number.

2. Insert “MAX5” IP ADDRESS (if LAN is chosen). Click on “TEST CONNECTION” to verify parameters.

3. Click on “Hard Drive” icon to connect “MAX5” using USB / RS485 cable or ETHERNET cable

1. Choose GSM Modem from list

2. Enter “MAX5” SIM number

3. Click on “World” icon.



After clicking on “LOCAL NETWORK” wait about 5 seconds. If connection is realized through a GSM MODEM is necessary to wait about 60 seconds.

If an error message is displayed or “MAX5” icon doesn’t appear as shown in next screen please try again after checking all connections.

*Configuration A, page 5

** Configuration B, page 6

***Configuration C, page 7

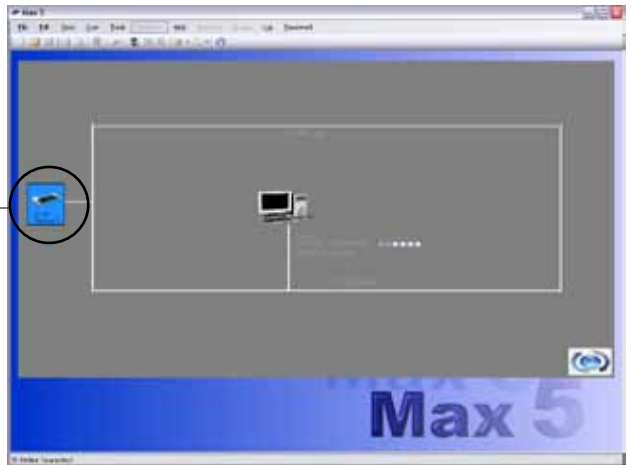
**** Configuration D, page 8

Software Setup

Main screen shows all “MAX5” instruments connected through RS485 to PC. ID number under “MAX5” icon identifies related instrument. Click on “MAX5” icon to enter into settings menu / reading values. To exit from program choose “FILE” menu then click on “EXIT”.

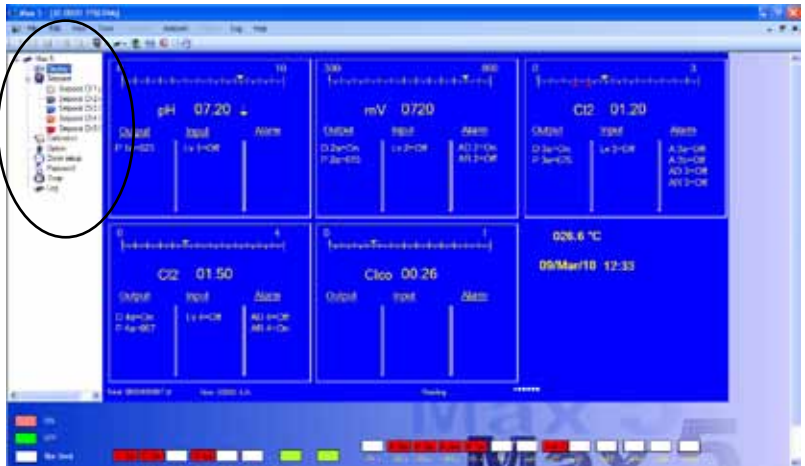
This icon means that “MAX5” has been properly “seen” by PC.

Click on this icon to enter into “MAX5” settings and reading values.



Click on related menu to modify “MAX5” parameters.

Refers to “OPERATING INSTRUCTIONS FOR MAX5 INSTRUMENT” for information.



To edit “MAX5” parameters enter password by selecting “CHANGE” within “SETPOINT” menu.

Using TIBBO hardware and a standard internet connection (over ethernet) the MAX5 can be remotely controlled. An internet capable LAN and ID Code are required for this type of connection. ID code (or code number) is a 6 digits unique code located on instrument's front panel.

1. Click on "System Name" and enter ID Code Number (located on MAX5 front panel)
2. Click on "WORLD" icon to start connection.





*When dismantling please separate material types and send them according to local recycling disposal requirements.
We appreciate your efforts in supporting your local Recycle Environmental Program.
Working together we'll form an active union to assure the world's invaluable resources are conserved.*