




- Non-spring return rotary actuators: For ball valves DN25...32
- Torque 5 Nm
- Modulating control LRU24-SR (AC/DC 24 V)
- Open/Close and floating control LRU24(-S) (AC/DC 24 V);
LRU230(-S) (AC 100...240 V)



Technical data

Basic Technical data	Connection cable	1 m, 0.75 mm ²
	Torque	5 Nm
	Angle of rotation	90°
	Running time	90 s
	Sound power level	max. 35 dB (A)
	Position indication	Mechanical
	Direction of rotation	selectable by switch (covered): Factory preset  change to  to reverse the direction of rotation
	Degree of protection	IP54 in any direction
	EMC	CE according to 89/336/EEC
	Ambient temperature range	-5 ... +50°C
	Non-operation temperature	-5 ... +80°C
	Temperature of medium	-5 ... +100°C
	Humidity test	EN 60730-1
	Maintenance	maintenance free
LRU24-SR	Nominal voltage range	AC/DC 19.2... 28.8 V
	Power consumption	1.5 W @running / 0.4 W @ holding
	Transformer sizing	3 VA
	Control Signal	0...10 VDC (input impedance 100kΩ)
	Operating range	2...10 VDC
	Measurement Voltage	2...10 VDC, Max. 1mA
	Protection class	III (safety low voltage)
	Weight	0.55 kg
LRU24(-S)	Nominal voltage range	AC/DC 19.2... 28.8 V
	Power consumption	1.5 W @running / 0.2 W @ holding
	Transformer sizing	2 VA
	Protection class	III (safety low voltage)
	Auxiliary switch (LRU24-S)	1 X SPDT, 1 mA ...3(0.5) A, AC 250 V 0... 100% adjustable
	Weight	0.55 kg
LRU230(-S)	Nominal voltage range	AC 85 ... 265 V
	Power consumption	2.0 W @ running / 0.5 W @ holding
	Transformer sizing	4 VA
	Low voltage directive	CE according to 73/23/EEC
	Protection class	II (Totally insulated) 
	Auxiliary switch (LRU230-S)	1 X SPDT, 1 mA ...3(0.5) A, AC 250 V 0... 100% adjustable
	Weight	0.60 kg

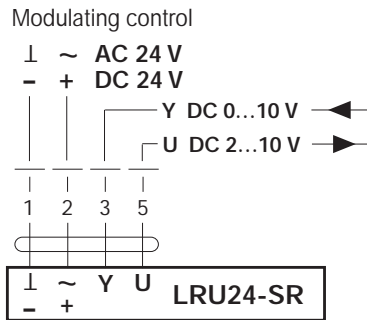
Product features

- Simple direct mounting** Simple direct mounting on the ball valve using only one screw.
- Manual operation** Manual operation by pushbutton when necessary.
- High function reliability** The actuator is overload-proof, needs no limit switches, stops automatically at the end stops.

Wirings

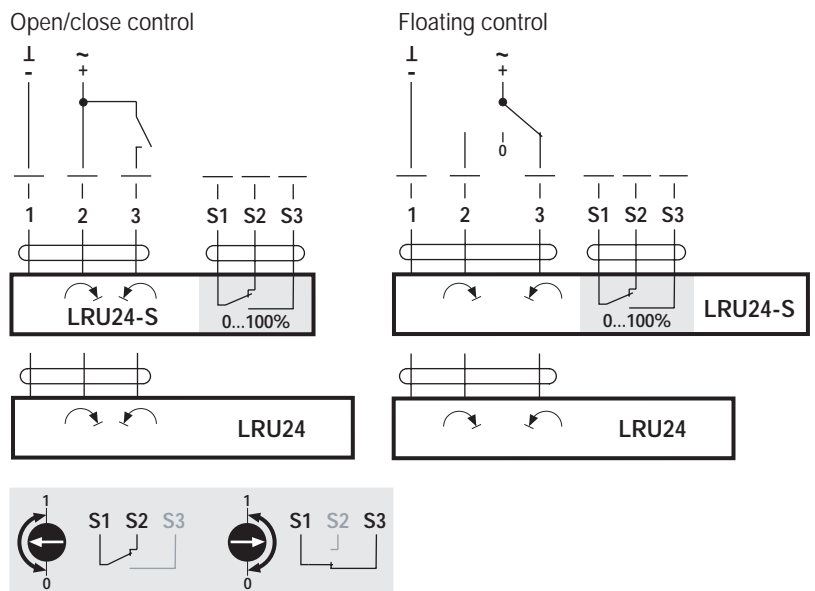
LRU24-SR

- Notes:**
- Connection via safety isolating transformer.
 - Other actuators can be connected in parallel. Please note the performance data.



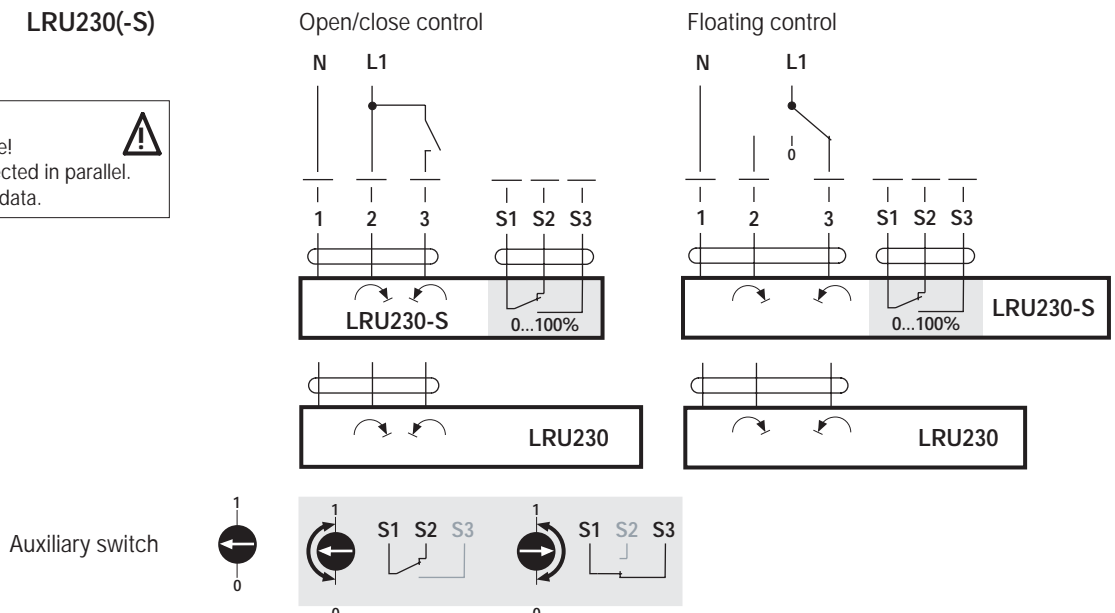
LRU24(-S)

- Notes:**
- Connection via safety isolating transformer.
 - Other actuators can be connected in parallel. Please note the performance data.



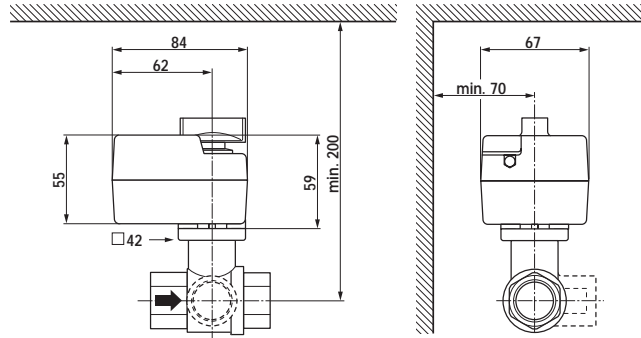
LRU230(-S)

- Notes:**
- Caution: Power supply voltage!
 - Other actuators can be connected in parallel. Please note the performance data.



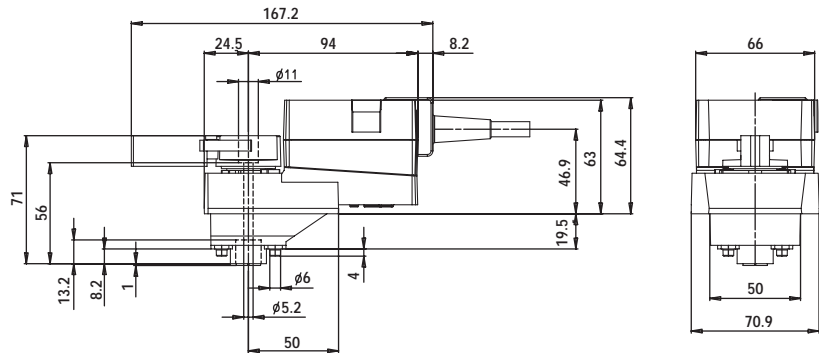
Dimensions: TR..

Measurement [mm]



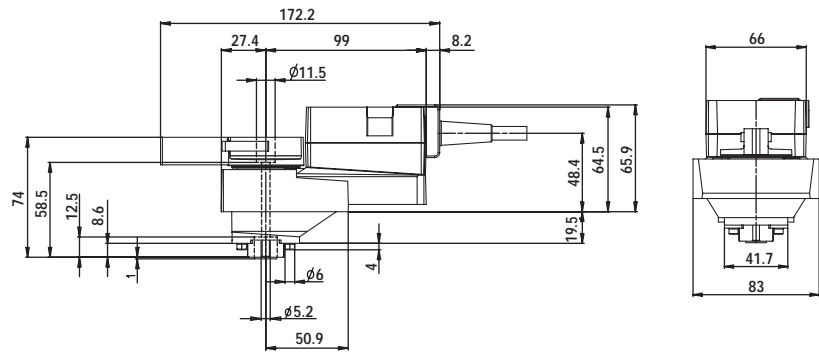
Dimensions: LRU..

Measurement [mm]



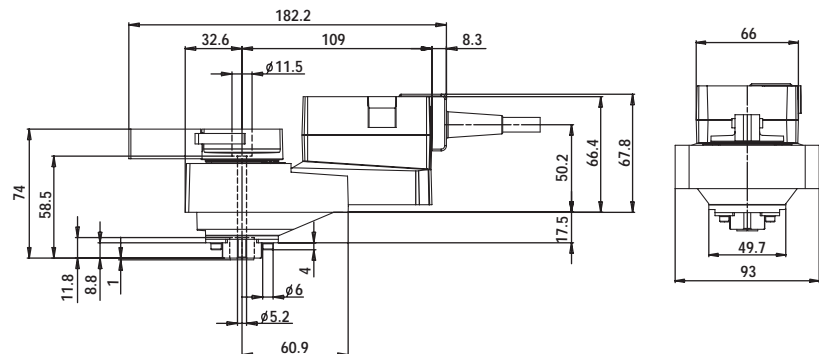
Dimensions: NRU..

Measurement [mm]

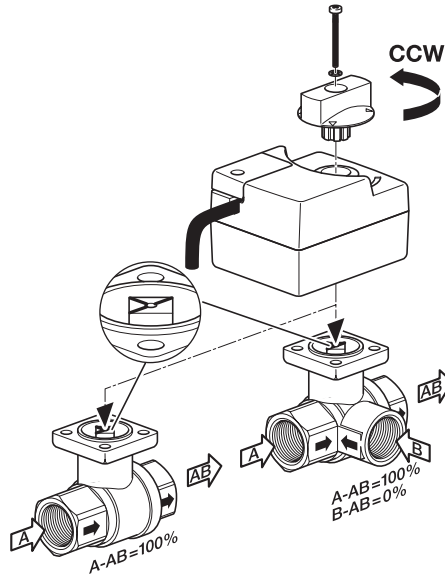


Dimensions: SRU..

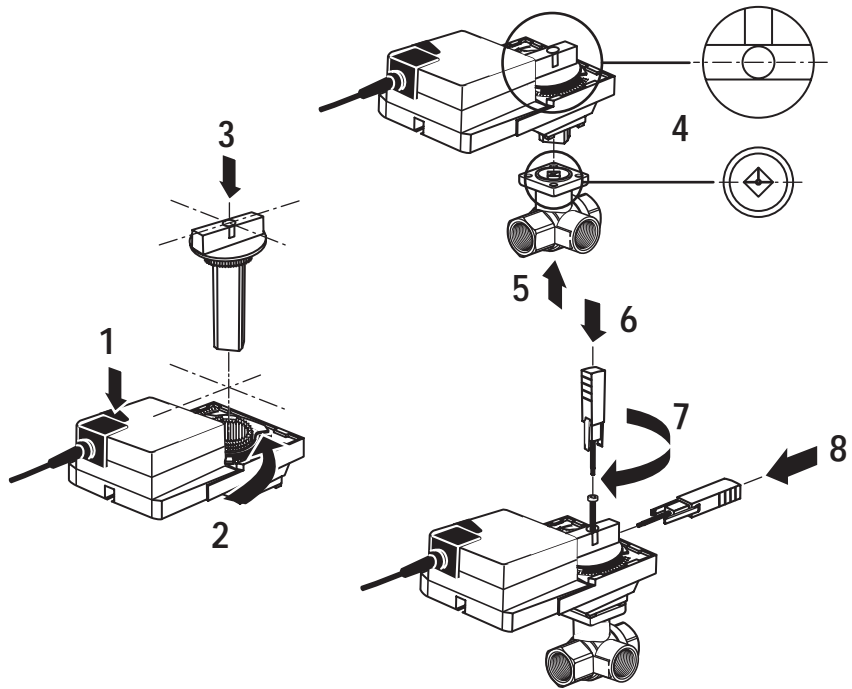
Measurement [mm]



Installation procedures: TR..



Installation procedures: LRU../NRU../SRU..



Auxiliary switch adjustment: LRU../NRU../SRU.. -S

1. Press the pushbutton, manually operate the universal clamp to desired switch position.
2. Turn switch pointer to the middle line.
3. When actuator moves clockwise(counter-clockwise) to switch position, switch indicator passes counter-clockwise(clockwise) the middle line, the contact between S1 and S3 is broken (made) and the contact between S1 and S2 is made (broken).

Note: The switching point should be about 5° from the mechanical end stops (1 short step on the scale).

